

Enter the expected level for this year group **2b**

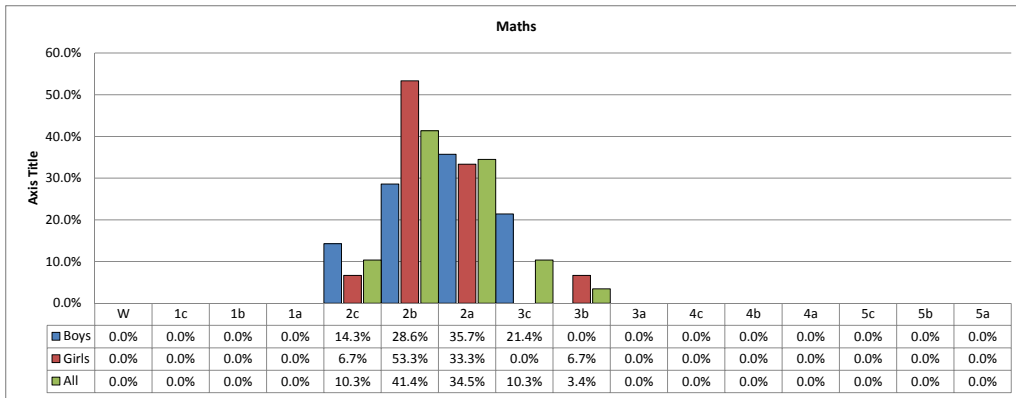
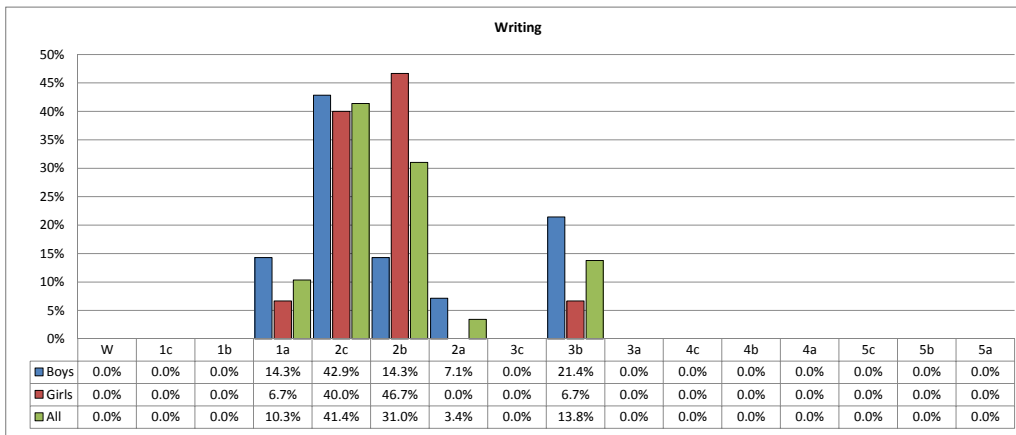
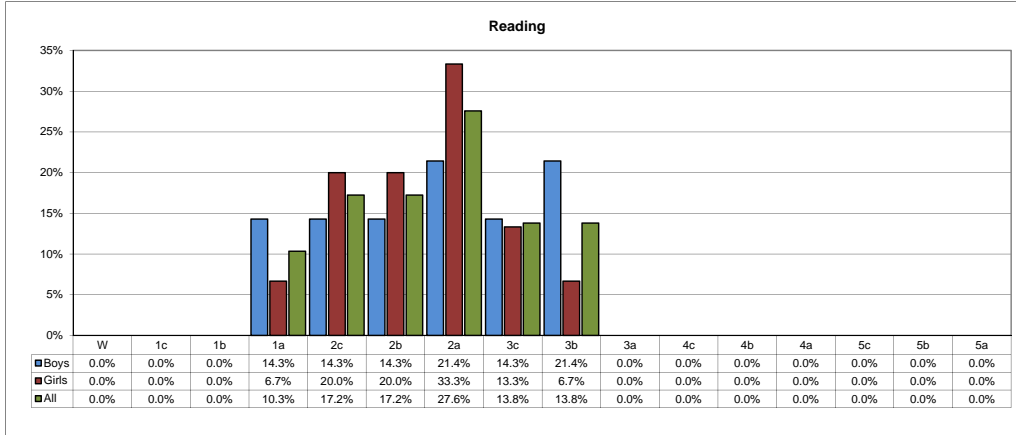
15

Progress is shown in NC points measured from the previous summer' attainment

Class Name		Year 2													
Reading															
Cohort		Pupils	Pupils	Points	Pupils	Points	Progress	Pupils	Points	Progress	Pupils	Points	Progress		
Pupils	Boys	14	13	12.1	14	13.7	1.6	14	15.1	3.1	14	16.4	4.4		
	Girls	15	15	11.5	15	13.1	1.6	15	14.1	2.5	15	15.9	4.4		
	All	29	28	11.8	29	13.4	1.6	29	14.6	2.8	29	16.2	4.4		
SEN	SA	2	1	7.0	2	8.0	1.0	2	10.0	3.0	2	12.0	5.0		
	SA+		0		0			0			0				
	ST		0		0			0			0				
	FSM	2	2	11.0	2	13.0	2.0	2	13.0	2.0	2	14.0	3.0		
EAL	4	3	11.0	4	11.0	0.0	4	13.0	2.0	4	15.0	4.0			
Progress to Expected Level				Progress towards targets											
At or Above		72.4%		At or Above		55.2%									
Below		27.6%		Below		44.8%									

Writing															
Cohort		Pupils	Pupils	Points	Pupils	Points	Progress	Pupils	Points	Progress	Pupils	Points	Progress		
Pupils	Boys	14	13	9.5	14	10.7	1.3	14	12.3	2.8	14	15.0	5.5		
	Girls	15	15	8.9	15	10.1	1.2	15	11.9	3.1	15	14.3	5.5		
	All	29	28	9.2	29	10.4	1.2	29	12.1	2.9	29	14.7	5.5		
SEN	SA	2	1	3.0	2	7.0	4.0	2	9.0	6.0	2	12.0	9.0		
	SA+		0		0			0			0				
	ST		0		0			0			0				
	FSM	2	2	6.0	2	9.0	3.0	2	11.0	5.0	2	13.0	7.0		
EAL	4	3	9.0	4	10.0	1.0	4	11.5	2.5	4	14.0	5.0			
Progress to Expected Level				Progress towards targets											
At or Above		48.3%		At or Above		62.1%									
Below		51.7%		Below		37.9%									

Maths															
Cohort		Pupils	Pupils	Points	Pupils	Points	Progress	Pupils	Points	Progress	Pupils	Points	Progress		
Pupils	Boys	14	13	10.8	14	11.9	1.0	14	14.0	3.2	14	16.3	5.4		
	Girls	15	15	10.3	15	11.3	0.9	15	13.1	2.8	15	15.9	5.6		
	All	29	28	10.6	29	11.6	1.0	29	13.6	3.0	29	16.1	5.5		
SEN	SA	2	1	7.0	2	9.0	2.0	2	11.0	4.0	2	14.0	7.0		
	SA+		0		0			0			0				
	ST		0		0			0			0				
	FSM	2	2	9.0	2	11.0	2.0	2	13.0	4.0	2	15.0	6.0		
EAL	4	3	11.0	4	11.0	0.0	4	13.5	2.5	4	16.5	5.5			
Progress to Expected Level				Progress towards targets											
At or Above		89.7%		At or Above		78.6%									
Below		10.3%		Below		21.4%									



Reading

READING	Cohort		Pupils	Previous Summer	Pupils	Points	Autumn Term	Pupils	Points	Progress	Spring Term	Pupils	Points	Progress	Summer Term	Pupils	Points	Progress
	Boys	Girls	All		SA	SA+		ST	FSM	EAL		14	13.71	1.64		14	15.14	3.07
			14		13	12.08		14	13.71	1.64		14	15.14	3.07		14	16.43	4.35
			15		15	11.53		15	13.13	1.60		15	14.07	2.53		15	15.93	4.40
			29		28	11.81		29	13.42	1.62		29	14.60	2.80		29	16.18	4.38
			2		1	7.00		2	8.00	1.00		2	10.00	3.00		2	12.00	5.00
					0			0				0				0		
					0			0				0				0		
			2		2	11.00		2	13.00	2.00		2	13.00	2.00		2	14.00	3.00
			4		3	11.00		4	11.00	0.00		4	13	2.00		4	15	4.00
Class	Year 2											Expected Level	2b	At or above Expected level	72.4%	At or above Target	55.2%	

Surname Forename	Date of Birth	Gender	FSM	Admission Date	Ethnicity	SEN Status	SEN Need	EAL	Attend	Target	Previous	Autumn	Prog	Spring	Prog	Summer	Prog	Dist to Targ
ALLEN Pat	05/06/2004	M		07/09/2009	AOTH			EAL		2b	1a	1a	0	2c	1	2b	1	0
BARTON Elizabeth	08/03/2004	F		03/09/2008						2a	2c	2b	1	2b	0	2a	1	0
BOWMAN Kelly	12/03/2004	F		03/09/2008						2b	1a	1a	0	2c	1	2b	1	0
BRANCH Marianne	22/03/2004	F		03/09/2008						2a	2c	2b	1	2b	0	2a	1	0
CHANDLER Keith	29/09/2003	M	Y	03/09/2008		A				2c	1c	1b	1	1b	0	1a	1	-1
COOPER Judith	04/08/2004	F		03/09/2008						3b	2b	2a	1	3c	1	3b	1	0
CROSS Jason	07/05/2004	M		03/09/2008						3b	2c	2a	2	3c	1	3c	0	-1
DAVIDSON Gladys	29/06/2004	F	Y	07/09/2009						2b	2b	2a	1	2a	0	2a	0	1
DESAI Julia	04/08/2004	F		03/09/2008						3b	1b	1a	1	2c	1	2b	1	-3
GRAHAM Eugene	12/03/2004	M		03/09/2008						2c	1b	1b	0	1a	1	2c	1	0
GRAVES Stephanie	01/07/2004	F		03/09/2008						2a	1b	1a	1	1a	0	2b	2	-1
HALL Erica	04/06/2004	F		03/09/2008						3b	2b	2a	1	2a	0	3c	1	-1
HILL Gretchen	31/07/2004	F		03/09/2008						2c	1b	1a	1	1a	0	2c	1	0
JOSEPH Lois	14/02/2004	F		03/09/2008						3b	1a	2c	1	2b	1	2a	1	-2
LAST Brett	20/11/2003	M		03/09/2008						3b	1a	2c	1	2b	1	2a	1	-2
LAWRENCE Neal	26/10/2003	M		03/09/2008						2a	2c	2b	1	2b	0	2a	1	0
LUCAS Sara	14/03/2004	F		03/09/2008	BAFR					2c	1b	1b	0	1b	0	1a	1	-1
MCNAMARA Francis	12/06/2004	M		03/09/2008						2b	2c	2b	1	2a	1	2a	0	1
MERRITT Shirley	01/03/2004	F		03/09/2008						3b	2b	2a	1	3c	1	3c	0	-1
MOON Marion	22/04/2004	F		03/09/2008						3b	1a	1a	0	1a	0	2c	1	-4
NEIL Anthony	07/09/2003	M		03/09/2008						2a	2b	3c	2	3b	1	3b	0	2
O'BRIEN Caroline	04/11/2003	F		07/09/2009	WOTH			EAL		2c	1c	1b	1	1a	1	2c	1	0
PARKS Gary	04/08/2004	M		03/09/2008						2b	1a	2c	1	2c	0	2b	1	0
RICH Jeremy	21/10/2003	M		03/11/2010	WOTH	A		EAL		2b		1c		1a	2	2c	1	-1
SONG Patrick	25/02/2004	M		03/09/2008	WOTH			EAL		3b	2b	2a	1	2a	0	3c	1	-1
STEELE Eric	29/12/2003	M		03/09/2008						3b	2a	3c	1	3b	1	3b	0	0
UNDERWOOD Harriet	29/08/2004	F		03/09/2008						2a	1a	2c	1	2b	1	2a	1	0
VICK Franklin	20/05/2004	M		03/09/2008						2b	2b	3c	2	3b	1	3b	0	3
WALLACE Jerome	15/08/2004	M		03/09/2008						2c	1c	1b	1	1b	0	1a	1	-1

WRITING

Group progress scores shown in APS measured from previous summer

Individual progress shown in sub levels shown term by term

Cohort	Pupils	Previous Summer	Pupils	Points	Autumn Term	Writing Pupils	Points	Progress	Spring Term	Pupils	Points	Progress	Summer Term	Pupils	Points	Progress
Pupils	Boys	14	13	9.46	14	10.71	1.25	14	12.29	2.82	14	15.00	5.54			
	Girls	15	15	8.87	15	10.07	1.20	15	11.93	3.07	15	14.33	5.47			
	All	29	28	9.16	29	10.39	1.23	29	12.11	2.95	29	14.67	5.50			
SEN	SA	2	1	3.00	2	7.00	4.00	2	9.00	6.00	2	12.00	9.00			
	SA+		0		0			0			0					
	ST		0		0			0			0					
	FSM	2	2	6.00	2	9.00	3.00	2	11.00	5.00	2	13.00	7.00			
	EAL	4	3	9.00	4	10.00	1.00	4	11.5	2.50	4	14	5.00			

Class **Year 2**

Surname Forename	Date of Birth	Gender	FSM	Admission Date	Ethnicity	SEN Status	SEN Need	EAL	Attend	Target	Previous	Autumn	Prog	Spring	Prog	Summer	Prog	Dist to Targ
ALLEN Pat	05/06/2004	M		07/09/2009	AOTH			EAL		3b	1b	1a	1	2c	1	2b	1	-3
BARTON Elizabeth	08/03/2004	F		03/09/2008						2a	1b	1a	1	1a	0	2b	2	-1
BOWMAN Kelly	12/03/2004	F		03/09/2008						2c	1b	1b	0	1a	1	2c	1	0
BRANCH Marianne	22/03/2004	F		03/09/2008						2b	1b	1a	1	2c	1	2c	0	-1
CHANDLER Keith	29/09/2003	M	Y	03/09/2008		A				2c	w	1c	2	1b	1	1a	1	-1
COOPER Judith	04/08/2004	F		03/09/2008						2a	1a	1a	0	2c	1	2b	1	-1
CROSS Jason	07/05/2004	M		03/09/2008						3b	1a	2c	1	2b	1	2a	1	-2
DAVIDSON Gladys	29/06/2004	F	Y	07/09/2009						1a	1b	1a	1	2c	1	2b	1	2
DESAI Julia	04/08/2004	F		03/09/2008						2b	1b	1b	0	1a	1	2c	1	-1
GRAHAM Eugene	12/03/2004	M		03/09/2008						2c	1b	1b	0	1a	1	2c	1	0
GRAVES Stephanie	01/07/2004	F		03/09/2008						2b	1c	1b	1	1a	1	2b	2	0
HALL Erica	04/06/2004	F		03/09/2008						2b	1a	1a	0	2b	2	2b	0	0
HILL Gretchen	31/07/2004	F		03/09/2008						2b	1c	1b	1	1a	1	2c	1	-1
JOSEPH Lois	14/02/2004	F		03/09/2008						2c	1b	1b	0	1a	1	2b	2	1
LAST Brett	20/11/2003	M		03/09/2008						2c	1b	1a	1	1a	0	2c	1	0
LAWRENCE Neal	26/10/2003	M		03/09/2008						2c	1c	1b	1	1a	1	2c	1	0
LUCAS Sara	14/03/2004	F		03/09/2008	BAFR					2c	1c	1b	1	1b	0	1a	1	-1
MCNAMARA Francis	12/06/2004	M		03/09/2008						2c	1b	1a	1	1a	0	2c	1	0
MERRITT Shirley	01/03/2004	F		03/09/2008						3b	2c	2b	1	2a	1	3b	2	0
MOON Marion	22/04/2004	F		03/09/2008						2c	1b	1b	0	1a	1	2c	1	0
NEIL Anthony	07/09/2003	M		03/09/2008						3b	1a	2c	1	2b	1	3b	3	0
O'BRIEN Caroline	04/11/2003	F		07/09/2009	WOTH			EAL		2c	1c	1b	1	1a	1	2c	1	0
PARKS Gary	04/08/2004	M		03/09/2008						2b	1b	1b	0	1b	0	2c	2	-1
RICH Jeremy	21/10/2003	M		03/11/2010	WOTH	A		EAL		2c		1c		1b	1	2c	2	0
SONG Patrick	25/02/2004	M		03/09/2008	WOTH			EAL		2b	1a	2c	1	2c	0	2b	1	0
STEELE Eric	29/12/2003	M		03/09/2008						3b	2b	2b	0	2a	1	3b	2	0
UNDERWOOD Harriet	29/08/2004	F		03/09/2008						2b	1c	1b	1	1a	1	2b	2	0
VICK Franklin	20/05/2004	M		03/09/2008						3b	1a	2c	1	2a	2	3b	2	0
WALLACE Jerome	15/08/2004	M		03/09/2008						2c	1b	1b	0	1a	1	1a	0	-1

MATHS

Group progress scores shown in APS measured from previous summer

Individual progress shown in sub levels shown term by term

Cohort	Pupils	Previous Summer	Autumn Term		Spring Term	Summer Term							
			Pupils	Points		Pupils	Points	Progress	Pupils	Points	Progress		
Pupils	Boys	14	13	10.85	14	11.86	1.01	14	14.00	3.15	14	16.29	5.44
	Girls	15	15	10.33	15	11.27	0.93	15	13.13	2.80	15	15.93	5.60
	All	29	28	10.59	29	11.56	0.97	29	13.57	2.98	29	16.11	5.52
SEN	SA	2	1	7.00	2	9.00	2.00	2	11.00	4.00	2	14.00	7.00
	SA+		0		0			0			0		
	ST		0		0			0			0		
	FSM	2	2	9.00	2	11.00	2.00	2	13.00	4.00	2	15.00	6.00
	EAL	4	3	11.00	4	11.00	0.00	4	13.5	2.50	4	16.50	5.50
Class	Year 2							Expected Level	2b	At or above Expected level	89.7%	At or above Target	78.6%

Surname Forename	Date of Birth	Gender	FSM	Admission Date	Ethnicity	SEN Status	SEN Need	EAL	Attend	Target	Previous	Autumn	Prog	Spring	Prog	Summer	Prog	Dist to Targ
ALLEN Pat	05/06/2004	M		07/09/2009	AOTH			EAL		2b	1b	1b	0	2c	2	2a	2	1
BARTON Elizabeth	08/03/2004	F		03/09/2008						2b	1b	1a	1	2c	1	2b	1	0
BOWMAN Kelly	12/03/2004	F		03/09/2008						2a	1a	1a	0	2c	1	2b	1	-1
BRANCH Marianne	22/03/2004	F		03/09/2008						2c	1b	1b	0	1a	1	2b	2	1
CHANDLER Keith	29/09/2003	M	Y	03/09/2008		A				2c	1c	1b	1	1a	1	2c	1	0
COOPER Judith	04/08/2004	F		03/09/2008						3c	2c	2b	1	2a	1	2a	0	-1
CROSS Jason	07/05/2004	M		03/09/2008						2a	1a	2c	1	2b	1	2a	1	0
DAVIDSON Gladys	29/06/2004	F	Y	07/09/2009						2a	1a	2c	1	2b	1	2a	1	0
DESAI Julia	04/08/2004	F		03/09/2008						2b	1b	1b	0	1a	1	2b	2	0
GRAHAM Eugene	12/03/2004	M		03/09/2008						2b	1b	1b	0	1a	1	2b	2	0
GRAVES Stephanie	01/07/2004	F		03/09/2008						2b	1b	1a	1	2c	1	2b	1	0
HALL Erica	04/06/2004	F		03/09/2008						3c	2b	2a	1	3c	1	3b	1	1
HILL Gretchen	31/07/2004	F		03/09/2008						2a	1a	1a	0	2c	1	2a	2	0
JOSEPH Lois	14/02/2004	F		03/09/2008						2b	1b	1b	0	1a	1	2b	2	0
LAST Brett	20/11/2003	M		03/09/2008						3c	2c	2b	1	2a	1	2a	0	-1
LAWRENCE Neal	26/10/2003	M		03/09/2008						2b	1b	1b	0	1a	1	2b	2	0
LUCAS Sara	14/03/2004	F		03/09/2008	BAFR					2c	1b	1b	0	1a	1	2b	2	1
MCNAMARA Francis	12/06/2004	M		03/09/2008						3c	2c	2c	0	2b	1	2a	1	-1
MERRITT Shirley	01/03/2004	F		03/09/2008						3c	2c	2b	1	2b	0	2a	1	-1
MOON Marion	22/04/2004	F		03/09/2008						2b	1a	2c	1	2c	0	2a	2	1
NEIL Anthony	07/09/2003	M		03/09/2008						2a	2c	2a	2	2a	0	3c	1	1
O'BRIEN Caroline	04/11/2003	F		07/09/2009	WOTH			EAL		2b	1b	1b	0	1a	1	2b	2	0
PARKS Gary	04/08/2004	M		03/09/2008						2c	1b	1b	0	1a	1	2c	1	0
RICH Jeremy	21/10/2003	M		03/11/2010	WOTH	A		EAL			1b			1a	1	2b	2	
SONG Patrick	25/02/2004	M		03/09/2008	WOTH			EAL		3c	2b	2a	1	3c	1	3c	0	0
STEELE Eric	29/12/2003	M		03/09/2008						3c	2c	2c	0	2a	2	2a	0	-1
UNDERWOOD Harriet	29/08/2004	F		03/09/2008						2c	1c	1c	0	1a	2	2c	1	0
VICK Franklin	20/05/2004	M		03/09/2008						2a	2c	2b	1	2a	1	3c	1	1
WALLACE Jerome	15/08/2004	M		03/09/2008						2c	1c	1b	1	1a	1	2b	2	1

Pupil Progress

Pupil Data			Reading			Writing			Maths		
Surname Forename	Date of Birth	Gender	Prev	Current	Prog	Prev	Current	Prog	Prev	Current	Prog
ALLEN Pat	05/06/2004	M	1a	2b	2	1b	2b	3	1b	2a	4
BARTON Elizabeth	08/03/2004	F	2c	2a	2	1b	2b	3	1b	2b	3
BOWMAN Kelly	12/03/2004	F	1a	2b	2	1b	2c	2	1a	2b	2
BRANCH Marianne	22/03/2004	F	2c	2a	2	1b	2c	2	1b	2b	3
CHANDLER Keith	29/09/2003	M	1c	1a	2	w	1a	4	1c	2c	3
COOPER Judith	04/08/2004	F	2b	3b	3	1a	2b	2	2c	2a	2
CROSS Jason	07/05/2004	M	2c	3c	3	1a	2a	3	1a	2a	3
DAVIDSON Gladys	29/06/2004	F	2b	2a	1	1b	2b	3	1a	2a	3
DESAI Julia	04/08/2004	F	1b	2b	3	1b	2c	2	1b	2b	3
GRAHAM Eugene	12/03/2004	M	1b	2c	2	1b	2c	2	1b	2b	3
GRAVES Stephanie	01/07/2004	F	1b	2b	3	1c	2b	4	1b	2b	3
HALL Erica	04/06/2004	F	2b	3c	2	1a	2b	2	2b	3b	3
HILL Gretchen	31/07/2004	F	1b	2c	2	1c	2c	3	1a	2a	3
JOSEPH Lois	14/02/2004	F	1a	2a	3	1b	2b	3	1b	2b	3
LAST Brett	20/11/2003	M	1a	2a	3	1b	2c	2	2c	2a	2
LAWRENCE Neal	26/10/2003	M	2c	2a	2	1c	2c	3	1b	2b	3
LUCAS Sara	14/03/2004	F	1b	1a	1	1c	1a	2	1b	2b	3
MCNAMARA Francis	12/06/2004	M	2c	2a	2	1b	2c	2	2c	2a	2
MERRITT Shirley	01/03/2004	F	2b	3c	2	2c	3b	4	2c	2a	2
MOON Marion	22/04/2004	F	1a	2c	1	1b	2c	2	1a	2a	3
NEIL Anthony	07/09/2003	M	2b	3b	3	1a	3b	5	2c	3c	3
O'BRIEN Caroline	04/11/2003	F	1c	2c	3	1c	2c	3	1b	2b	3
PARKS Gary	04/08/2004	M	1a	2b	2	1b	2c	2	1b	2c	2
RICH Jeremy	21/10/2003	M		2c	3		2c	3		2b	3
SONG Patrick	25/02/2004	M	2b	3c	2	1a	2b	2	2b	3c	2
STEELE Eric	29/12/2003	M	2a	3b	2	2b	3b	3	2c	2a	2
UNDERWOOD Harriet	29/08/2004	F	1a	2a	3	1c	2b	4	1c	2c	3
VICK Franklin	20/05/2004	M	2b	3b	3	1a	3b	5	2c	3c	3
WALLACE Jerome	15/08/2004	M	1c	1a	2	1b	1a	1	1c	2b	4

Reading							Writing							Maths						
Fname	Aut	Spr	Sum	Overall	Prev	Latest	Fname	Aut	Spr	Sum	Overall	Prev	Latest	Fname	Aut	Spr	Sum	Overall	Prev	Latest
Judith C	1	1	1	3	2b	3b	Anthony N	1	1	3	5	1a	3b	Pat A	0	2	2	4	1b	2a
Jason C	2	1	0	3	2c	3c	Franklin V	1	2	2	5	1a	3b	Jerome W	1	1	2	4	1c	2b
Julia D	1	1	1	3	1b	2b	Keith C	2	1	1	4	w	1a	Elizabeth B	1	1	1	3	1b	2b
Stephanie G	1	0	2	3	1b	2b	Stephanie G	1	1	2	4	1c	2b	Marianne B	0	1	2	3	1b	2b
Lois J	1	1	1	3	1a	2a	Shirley M	1	1	2	4	2c	3b	Keith C	1	1	1	3	1c	2c
Brett L	1	1	1	3	1a	2a	Harriet U	1	1	2	4	1c	2b	Jason C	1	1	1	3	1a	2a
Anthony N	2	1	0	3	2b	3b	Pat A	1	1	1	3	1b	2b	Gladys D	1	1	1	3	1a	2a
Caroline O	1	1	1	3	1c	2c	Elizabeth B	1	0	2	3	1b	2b	Julia D	0	1	2	3	1b	2b
Jeremy R		2	1	3		2c	Jason C	1	1	1	3	1a	2a	Eugene G	0	1	2	3	1b	2b
Harriet U	1	1	1	3	1a	2a	Gladys D	1	1	1	3	1b	2b	Stephanie G	1	1	1	3	1b	2b
Franklin V	2	1	0	3	2b	3b	Gretchen H	1	1	1	3	1c	2c	Erica H	1	1	1	3	2b	3b
Pat A	0	1	1	2	1a	2b	Lois J	0	1	2	3	1b	2b	Gretchen H	0	1	2	3	1a	2a
Elizabeth B	1	0	1	2	2c	2a	Neal L	1	1	1	3	1c	2c	Lois J	0	1	2	3	1b	2b
Kelly B	0	1	1	2	1a	2b	Caroline O	1	1	1	3	1c	2c	Neal L	0	1	2	3	1b	2b
Marianne B	1	0	1	2	2c	2a	Jeremy R		1	2	3		2c	Sara L	0	1	2	3	1b	2b
Keith C	1	0	1	2	1c	1a	Eric S	0	1	2	3	2b	3b	Marion M	1	0	2	3	1a	2a
Eugene G	0	1	1	2	1b	2c	Kelly B	0	1	1	2	1b	2c	Anthony N	2	0	1	3	2c	3c
Erica H	1	0	1	2	2b	3c	Marianne B	1	1	0	2	1b	2c	Caroline O	0	1	2	3	1b	2b
Gretchen H	1	0	1	2	1b	2c	Judith C	0	1	1	2	1a	2b	Jeremy R		1	2	3		2b
Neal L	1	0	1	2	2c	2a	Julia D	0	1	1	2	1b	2c	Harriet U	0	2	1	3	1c	2c
Francis M	1	1	0	2	2c	2a	Eugene G	0	1	1	2	1b	2c	Franklin V	1	1	1	3	2c	3c
Shirley M	1	1	0	2	2b	3c	Erica H	0	2	0	2	1a	2b	Kelly B	0	1	1	2	1a	2b
Gary P	1	0	1	2	1a	2b	Brett L	1	0	1	2	1b	2c	Judith C	1	1	0	2	2c	2a
Patrick S	1	0	1	2	2b	3c	Sara L	1	0	1	2	1c	1a	Brett L	1	1	0	2	2c	2a
Eric S	1	1	0	2	2a	3b	Francis M	1	0	1	2	1b	2c	Francis M	0	1	1	2	2c	2a
Jerome W	1	0	1	2	1c	1a	Marion M	0	1	1	2	1b	2c	Shirley M	1	0	1	2	2c	2a
Gladys D	1	0	0	1	2b	2a	Gary P	0	0	2	2	1b	2c	Gary P	0	1	1	2	1b	2c
Sara L	0	0	1	1	1b	1a	Patrick S	1	0	1	2	1a	2b	Patrick S	1	1	0	2	2b	3c
Marion M	0	0	1	1	1a	2c	Jerome W	0	1	0	1	1b	1a	Eric S	0	2	0	2	2c	2a